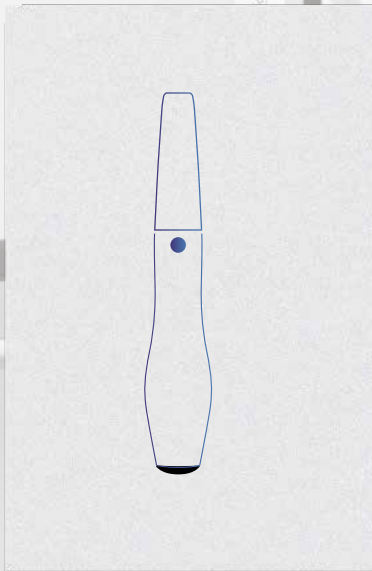


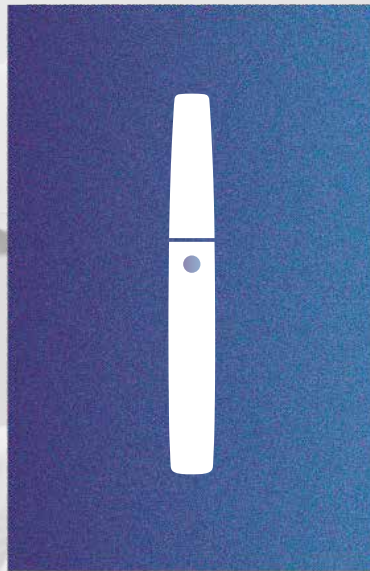


# PANDA SCANNER

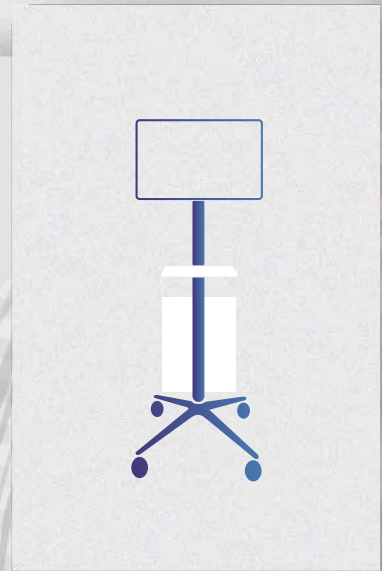
## CATALOG



PANDA P3



PANDA smart



BAMBOO



# Features



## Smaller and Lighter

Only 138g  
221x27x25mm



## Faster and More Accurate

1 min ultra-fast scan  
7  $\mu$ m ultra-high accuracy



## Plug and Play

No power adapter needed



## New Designed Tip

White  Silver   
50-100 autoclaving cycles  
More ergonomic

*Smaller  
but  
Greater*



# Rainbow Colors

The art of intraoral scanners

-  Yellow
-  Silver
-  Purple
-  Blue
-  Red
-  White





**Super Quiet**  
Turbo Fan Cooling



**More Advanced**  
Self-developed Projector Module and Core Processor



**Much Durable**  
High-strength Aviation Aluminum Alloy



**High Imaging**  
SCHOTT ED Optical Glass Lens

# Parameters

## PRODUCT INFORMATION

Category	PANDA smart
Technology	Staring Scanning with Coded Structure Light
Anti Fog System	Intelligent Heating
Accuracy	≤7μm
Precision	≤5μm
Handpiece Weight	138g (192g with cable)
Handpiece Dimension	221x27x25mm
Handpiece Enclosure	High-strength Aviation Aluminum Alloy
Scan Field	18x16mm
Scan Depth	0-20mm
True Color	Full HD
Tips	x6 (Autoclavable)
Tip Autoclave Cycle	50-100 Times
Calibrator	Automatic
Scanning Control	Button
Motion Sensing	Support
Data Interface	USB3.0
Cable Length (m)	1.85m

## AFTERSALES

Category	PANDA smart
Standard Warranty	1 year
Extended Warranty	2-3 years available



# SOFTWARE

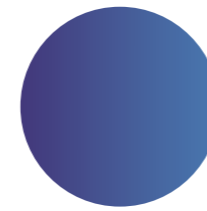
Category	PANDA smart
Types of Scanning	Orthodontics, Implant, Restoration
Image Store	Yes
3D Data Preview	Yes
Output Files	STL, PLY, PTY (encrypted for user)
Cloud Service	Yes
Cloud Service Price	5GB/free
Direct Compatibility with Dental CAD	Exocad*
Main Image Processing Tools	Trim/Edit/Recover/Lock, etc.
Margin Line Drawing	Yes
Occlusal Match	Yes
Undercut	Yes
Data Comparison	Yes
AI Technology	Auto Tissue Remove, Overlap Correct, etc.
Software License	Free
Software Upgrade	Free
Transfer Data with API	Available

\*All names, logos, brands and other trademarks featured or referred to within this brochure are the property of their respective trademark holders.

# PC REQUIREMENTS

Category	PANDA smart
CPU	Intel i7-8700(3.2GHz) and above
Memory	DDR2400 16G and above
Hard Disk	Solid state drive 120G and above
GPU	NVIDIA GTX1060 (6G) and above
Computer Operating System	Windows10*64 bit
Display	Resolution 1920×1080 and above

\*All names, logos, brands and other trademarks featured or referred to within this brochure are the property of their respective trademark holders.



**Ergonomic**  
**Efficient**  
**Innovative**





# Features



## Button Control

The tiny button carries great responsibilities, controlling the entire digital workflow. It prevents cross contamination by not touching the screen or clicking the mouse. Safety is always the top priority.



## Motion Sensing

The gyroscope inside the scanner allows to see different angle of scanned images by just simply rotating the scanner. So you do not have to touch the screen to see the image.



# Parameters

**1** min  
Full Arch Scanning

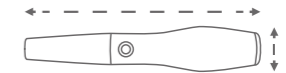
**5** tips  
with 3 Different Angles

**10**  $\mu$ m  
More Precise

**228** g  
Aviation Aluminum Alloy

Overall Size

216 x 40 x 36 mm



Tip End

19.6 x 14.6 mm Autoclavable

Field of View

18 x 16 mm

Depth of Field

0-15 mm (Adjustable up to 20mm)

Patents

40+

Certificates

CFDA/CE/ISO13485/FDA/INMETRO/ANVISA, etc.

Interface

USB3.0

Data Output

STL PLY PTY \*encrypted data available



# PRODUCT INFORMATION

Category	PANDA P3
Technology	Staring Scanning with Coded Structure Light
Camera Number	x 3
Scan Field	18x16mm
Scan Depth	0-15 mm (Adjustable up to 20mm)
Accuracy	≤15μm
Precision	≤10μm
True Color	Full HD
Anti Fog System	Intelligent Heating
Full Arch Scanning Time	1 min
Handpiece Enclosure	Aviation Aluminum Alloy
Handpiece Dimension	216 x 40 x 36 mm
Handpiece Weight	228g
Tip Types	3 types (N/M/D)
Number of Tips included	x 5 (Autoclavable)
Tip Autoclave Cycle	20-50 times
Calibrator	Automatic
Scanning Control	Button
Data Interface	USB3.0
Cable Length (m)	2m
Power Supply Type	AC/DC Medical Power Adapter
Supply Voltage (V)	100-240V/50-60Hz
Supply Current (A)	0.7-1.5A
Storage Temperature (°C)	-10°C-55°C

# SOFTWARE

Category	PANDA P3
Types of Scanning	Orthodontics, Implant, Restoration
Image Store	Yes
3D Data Preview	Yes
Output Files	STL, PLY, PTY (encrypted for user)
Cloud Service	Yes
Cloud Service Price	5GB/free
Direct Compatibility with Dental CAD	Exocad*
Main Image Processing Tools	Trim/Edit/Recover/Lock, etc.
Margin Line Drawing	Yes
Occlusal Match	Yes
Undercut	Yes
Data Comparison	Yes
AI Technology	Auto Tissue Remove, Overlap Correct, etc.
Software License	Free
Software Upgrade	Free
Transfer Data with API	Available

\*All names, logos, brands and other trademarks featured or referred to within this brochure are the property of their respective trademark holders.

# AFTERSALES

Category	PANDA P3
Standard Warranty	1 year
Extended Warranty	2-3 years available

# Applicatoion



Data Acquisition



CAD - Implant Surgery Planning



3D Guide Printing



Dental Implant



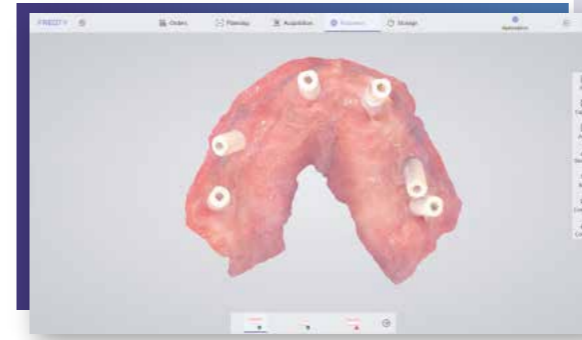
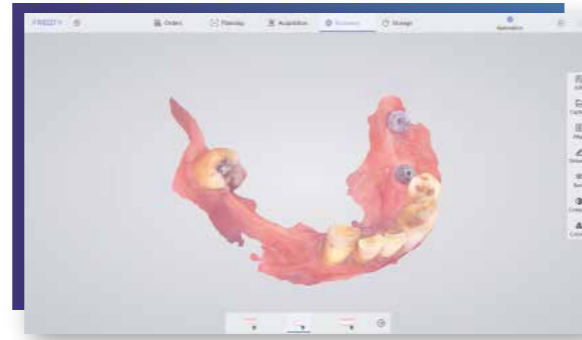
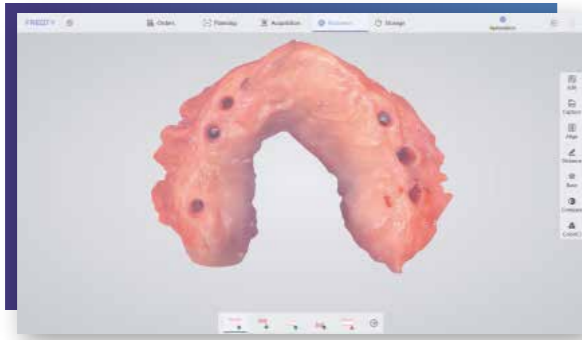
Secondary Data Acquisition



Make Dental Crowns



Wear Dental Crowns



Data Acquisition



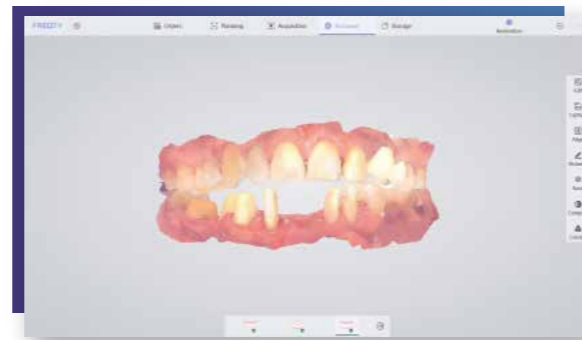
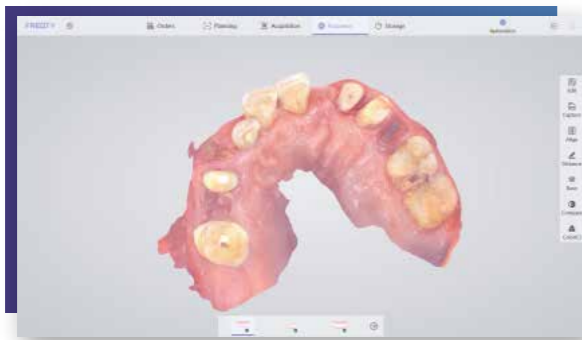
CAD - Restoration Design



CAM- Crown Milling - Wear Crowns



Wear Dentures



Data Acquisition



CAD - Orthodontic Plan



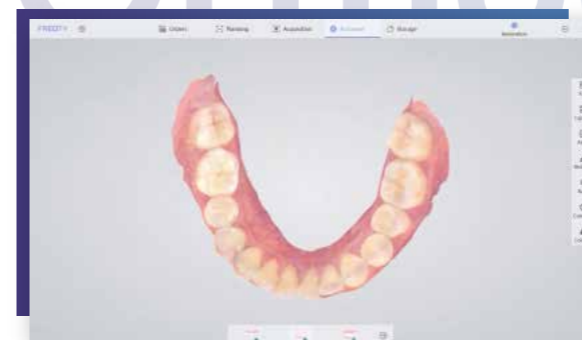
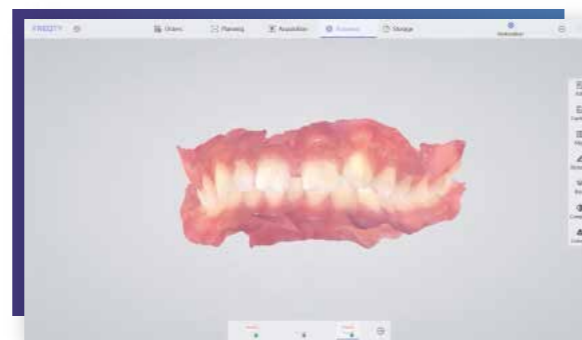
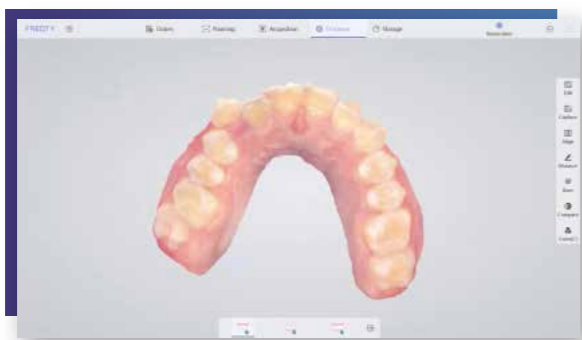
3D Model Printing



Make Aligners



Wear Aligners



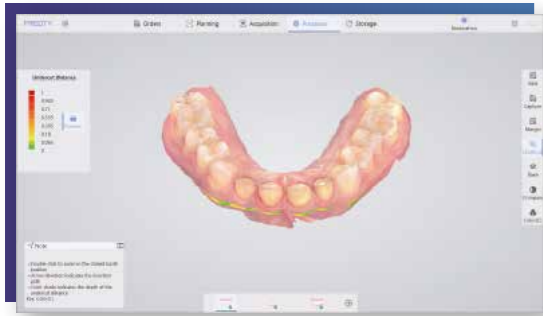
Implant

Restoration

Orthodontics

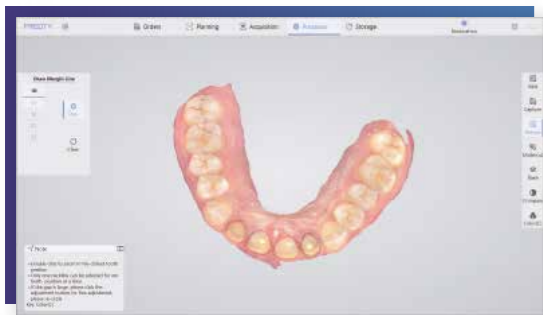


# Software Features



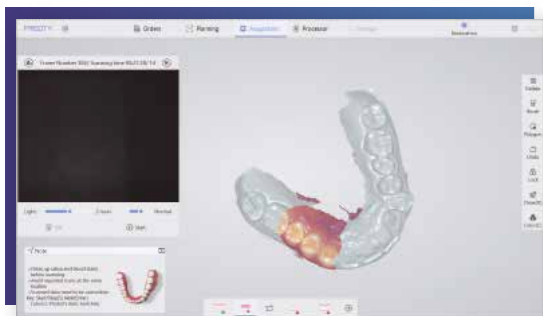
## Undercut Check

Auxiliary confirmation in place, colour gradient indicates undercut, accurate prediction, and improves the communication efficiency between doctors and technicians.



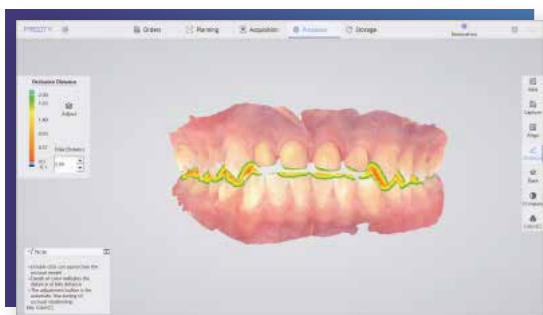
## Margin Line Drawing

Draw accurate and clear margin lines, linking doctors and technicians to reduce rework.



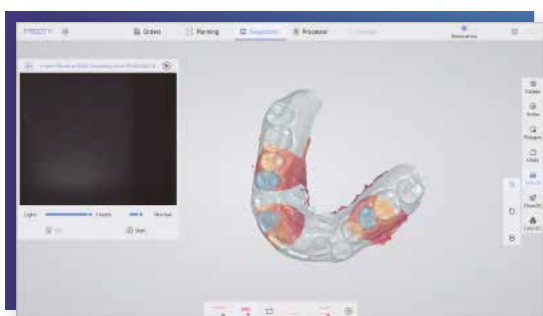
## Pre-preparation Scan

Obtain pre-preparation tooth state, retain bite data, and reshape the original good teeth.



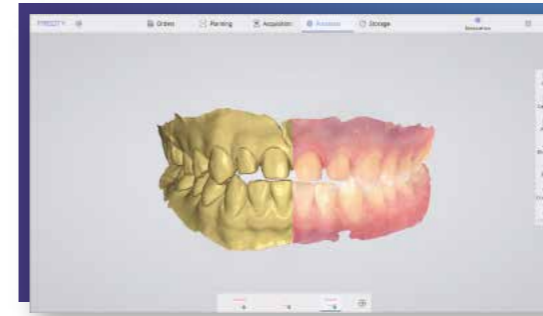
## Bite Check

Color gradient indicates distance, accurately judges the restoration distance and assists in improving the effect of tooth preparation.



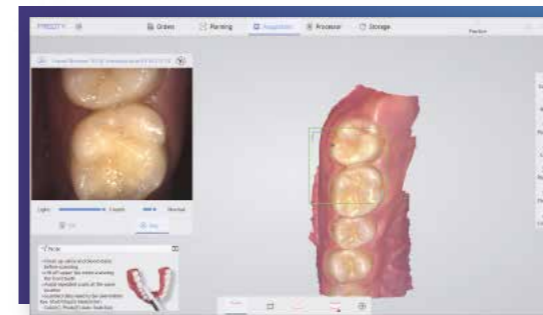
## Lock Data

Locks the tooth position to prevent data loss and reject excess data interference.



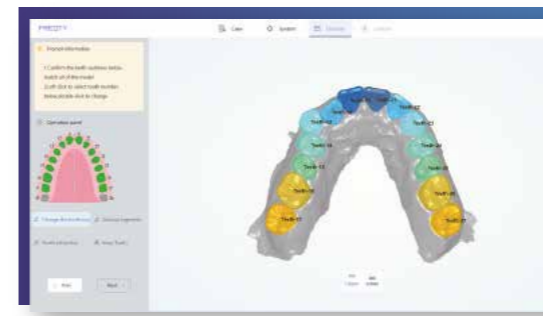
## Color Switch

True color jaws, clearly restore details, one click to switch colors, and check model data comprehensively.



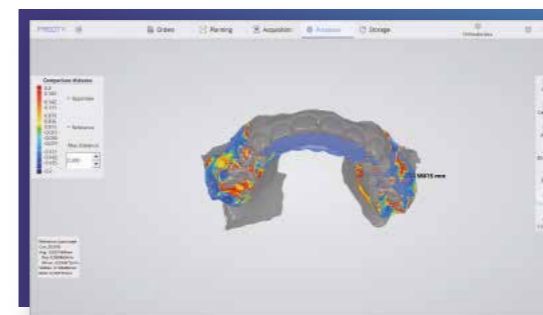
## AI Intelligent Scan

Easily identify soft and hard tissues, eliminate redundant data, and make accurate dental models.



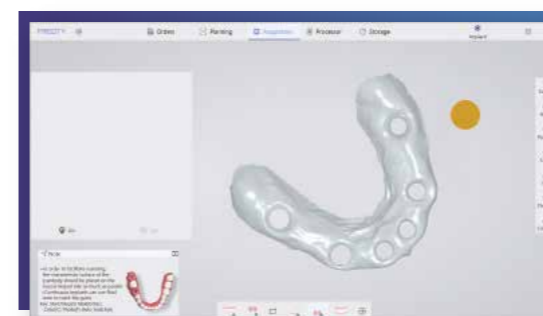
## Orthodontic Simulation

Generate simulation animations to help doctors and patients communicate, share quickly, and promote orders.



## Disease Course Monitoring

Full-cycle diagnosis and treatment monitoring, comparative observation of model differences, simultaneous analysis, comprehensive upgrade of diagnosis and research.



## Hole Tool (PANDA smart)

Clear cuff data, avoid tissue interference and lock automatically, significantly improving data reliability.



BAMBOO





KAYAN

Tel: +20 109 709 5059 +227473941

Email: [info@kayan-dental.com](mailto:info@kayan-dental.com)

Web: [www.kayan-dental.com](http://www.kayan-dental.com)

Address: Memaar Al Morshedy

Maadi Grand City, Cairo

